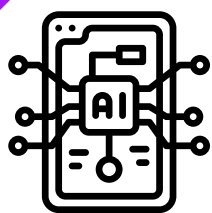


AI Authorship, Copyright & Plagiarism - Best Practices



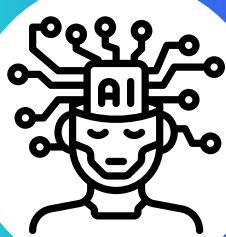
ACCOUNTABILITY

AI can generate authoritative-sounding output that can be incorrect, incomplete, or biased, so applying the AI technology should be done with human oversight and control and all work should be reviewed and edited carefully. Any section of a manuscript written by a language processing system (NLP) system should be checked by a domain expert for accuracy, bias, relevance, and reasoning.



TRANSPARENCY

Because NLP systems may be used in ways that may not be obvious to the reader, researchers should disclose their use of such systems and indicate which parts of the text were written or co-written by an NLP system.



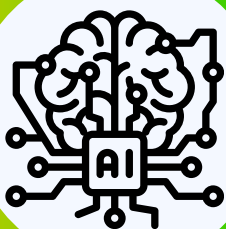
INTEGRITY

While it has always been possible for researchers to fabricate or falsify text, NLP systems make it much easier to do this, because they can generate narratives quickly from a few simple prompts. Researchers should not use NLP systems to fabricate empirical data or falsify existing data.



DIGITAL IMAGES

The issues of using AI in publications go far beyond the use of AI to write text. For decades now, researchers have used statistics programs, such as SPSS, to analyze data and graphics programs, such as Photoshop, to process digital images. All uses of computer programs that substantially impact the content of the manuscript should be disclosed.

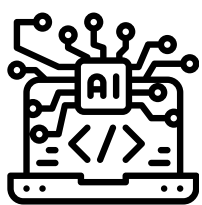


ETHICAL ISSUES

Ethical issues are not restricted to NLP-generated text only. It is possible that researchers may employ these systems to generate an initial literature survey, find references, or synthesize ideas related to their work and then revise these suggestions to disguise their use and to prevent them from being identified by systems that detect NLP-generated content. But just as plagiarism can involve the misappropriation or theft of words or ideas, NLP-generated ideas may also affect the integrity of publications. When NLP assistance has impacted the content of a publication (even in the absence of direct use of NLP-generated text), this should be disclosed.

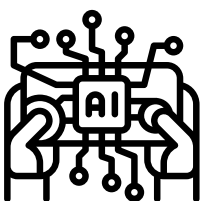


AI Authorship, Copyright & Plagiarism - Key Takeaways



DISCLOSURE

Disclose and describe the use of any natural language processing (NLP) systems in writing the manuscript text or generating ideas for the manuscript.



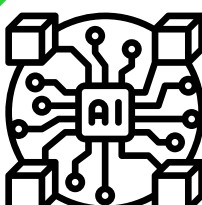
RESPONSIBILITY

Accept full responsibility for the text's factual and citation accuracy.



SCIENTIFIC JOURNALS

Review the AI requirements/policy for specific journals for which you are submitting to for publication.



CITATIONS

Properly cite NLP use when applicable. Review APA and MLA style suggestions for citing the use of AI.



ACKNOWLEDGEMENT

Acknowledge the use of NLP/LLM systems in the text (e.g., methods section) and mention the NLP/LLM use in the references section. Specify who used the system, the time and date of the use, the prompt(s) used to generate the text, the sections(s) containing the text; and/or ideas in the paper resulting from NLP use.

