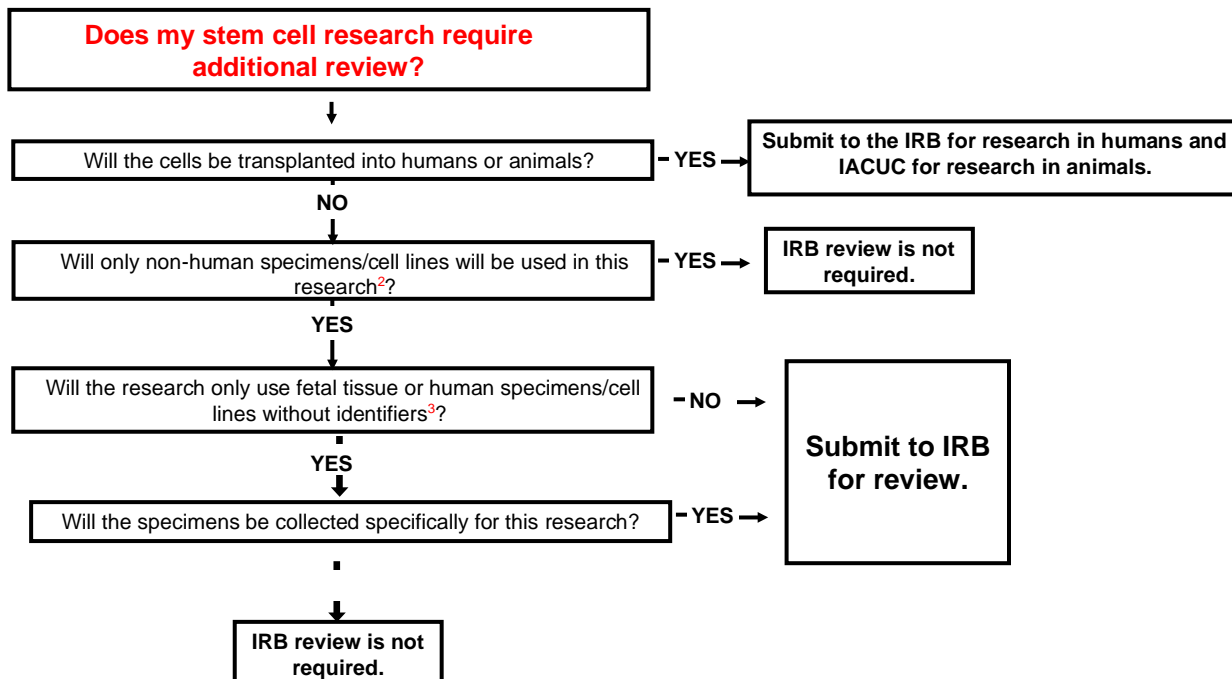
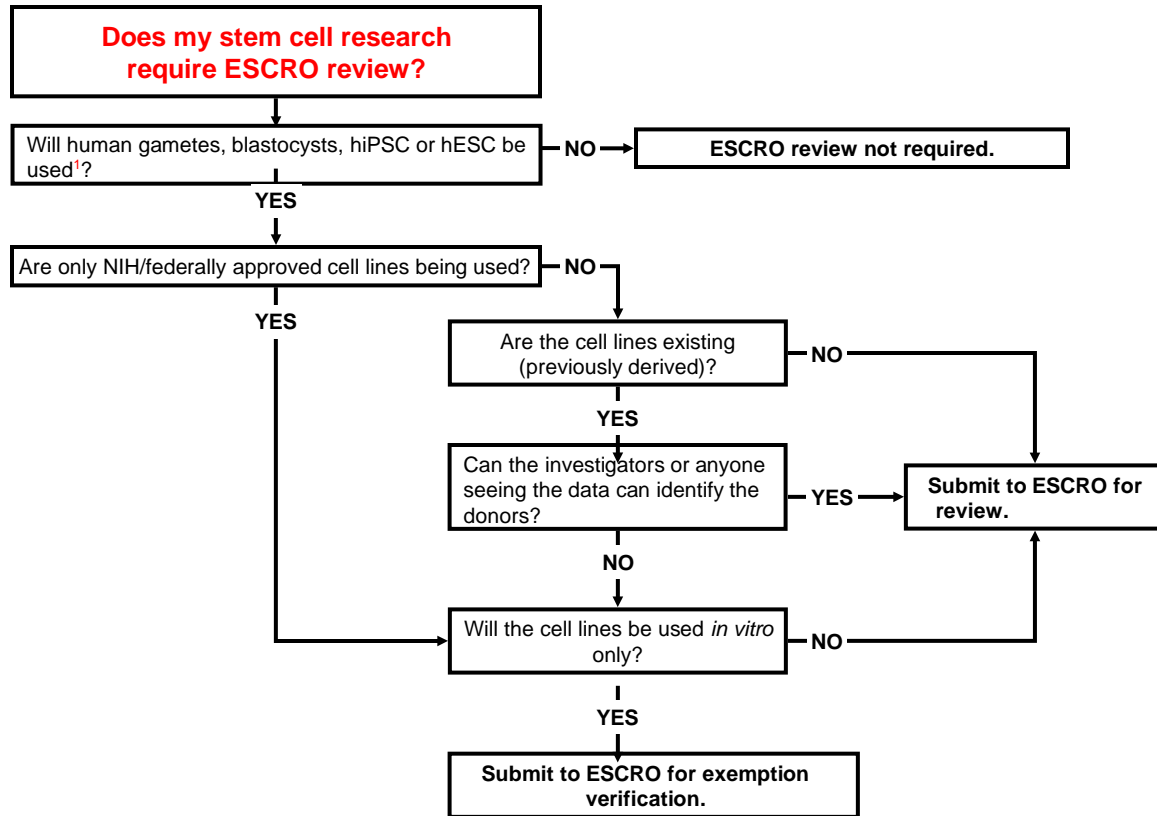


ESCRO and IRB Review Determination Charts



The decision tree is designed to help guide you through the process of when you need to submit to the ESCRO committee, but please note that you are ultimately responsible for the decision of when to submit and to follow all the ESCRO policy requirements. If you are in doubt, please contact the ESCRO committee at oric@emory.edu.

¹ Human embryonic stem cells (hESC); Human Induced Pluripotent Stem Cells (hiPSC)

² You are required to use cell lines from NIH-approved sources.

³ To consider specimens de-identified, no one in the team should have access to this information or the key or code to get to the identifiable information. Any use of fetal tissue needs approval by RCRA. Submit your request for the use of fetal tissue at oric@emory.edu.