



Research Compliance & Regulatory Affairs (RCRA)

Deepika Bhatia, MSBME, CCRP, CHRC, CHPC, CCEP

Associate Vice President

Research Integrity Officer

Chief Research Compliance & Chief Research Security Officer

Ask RCRA

May 2025



Elements of an Effective Research Compliance Program

Response & Development

- Corrective Action Plans
- External Reporting
- Research Noncompliance Investigations

Auditing & Monitoring

- Risk assessment
- Auditing
- Monitoring & Surveillance - PAMs

Enforcing Standards

- Research Misconduct
- Disciplinary guidelines outlined in policies

Effective Communication

- Website resources
- Ask RCRA, Webinars/Workshops
- Communication partnership with schools

Policies & Procedures

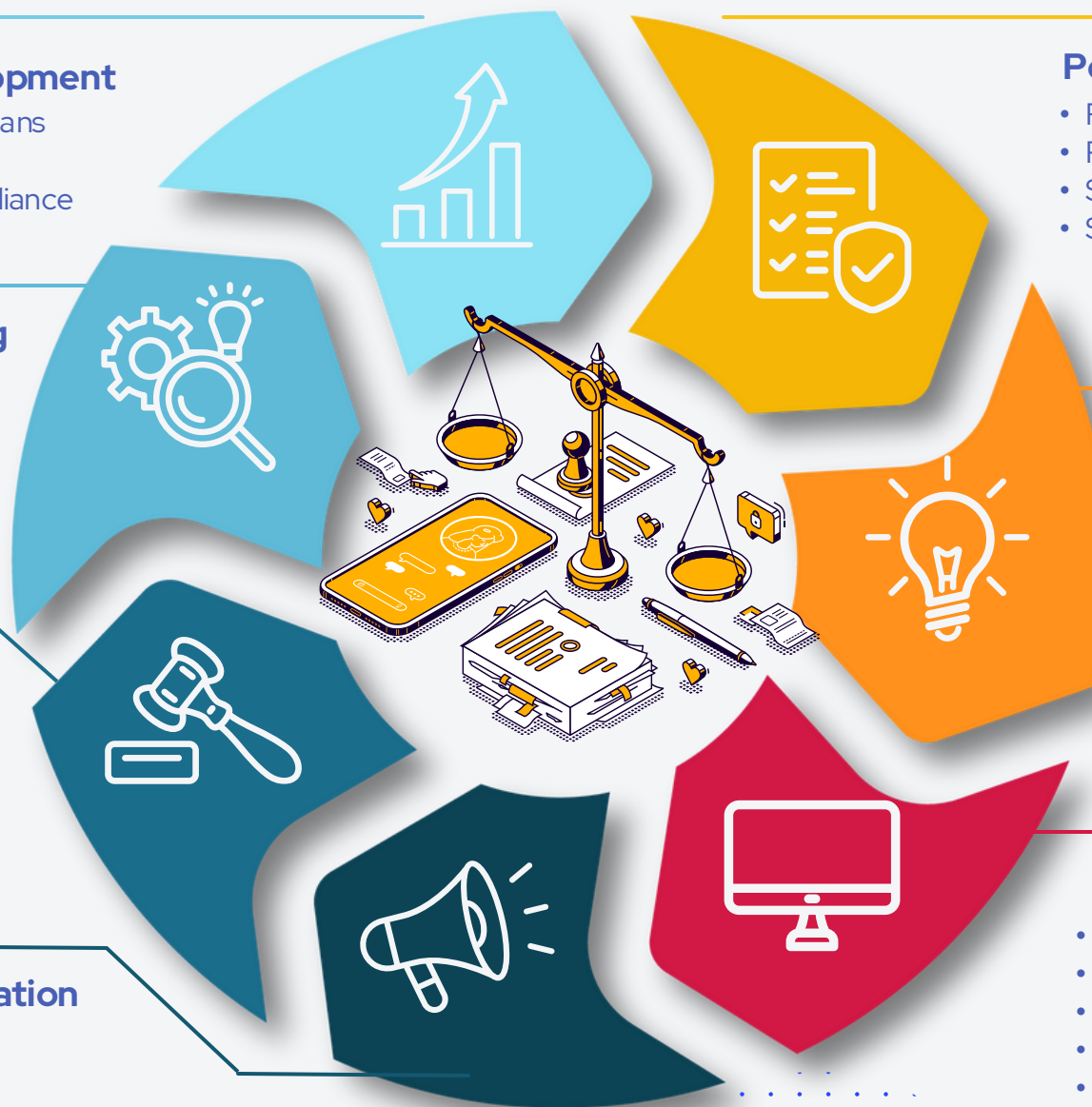
- ReSeLeCT Committee
- Policy Catalog
- Streamlined policy process
- SOPs and process documents

Compliance Leadership

- Research Compliance committees
- Designated Research Compliance Officer

Training & Education

- RCR Training
- Research Security Training
- COI Training
- Export Control Training
- Global Safety and Security Training
- Controlled Substances & Dangerous Drugs



RCRA HIGH FIVE



Collaborate with Confidence & Compliance

Research Security
& Export Controls



Focus on Disclosure Compliance

COI, ICOI, COC



Research Operational Compliance

IACUC & Controlled
Substances Use



Navigating an Everchanging Regulatory Landscape

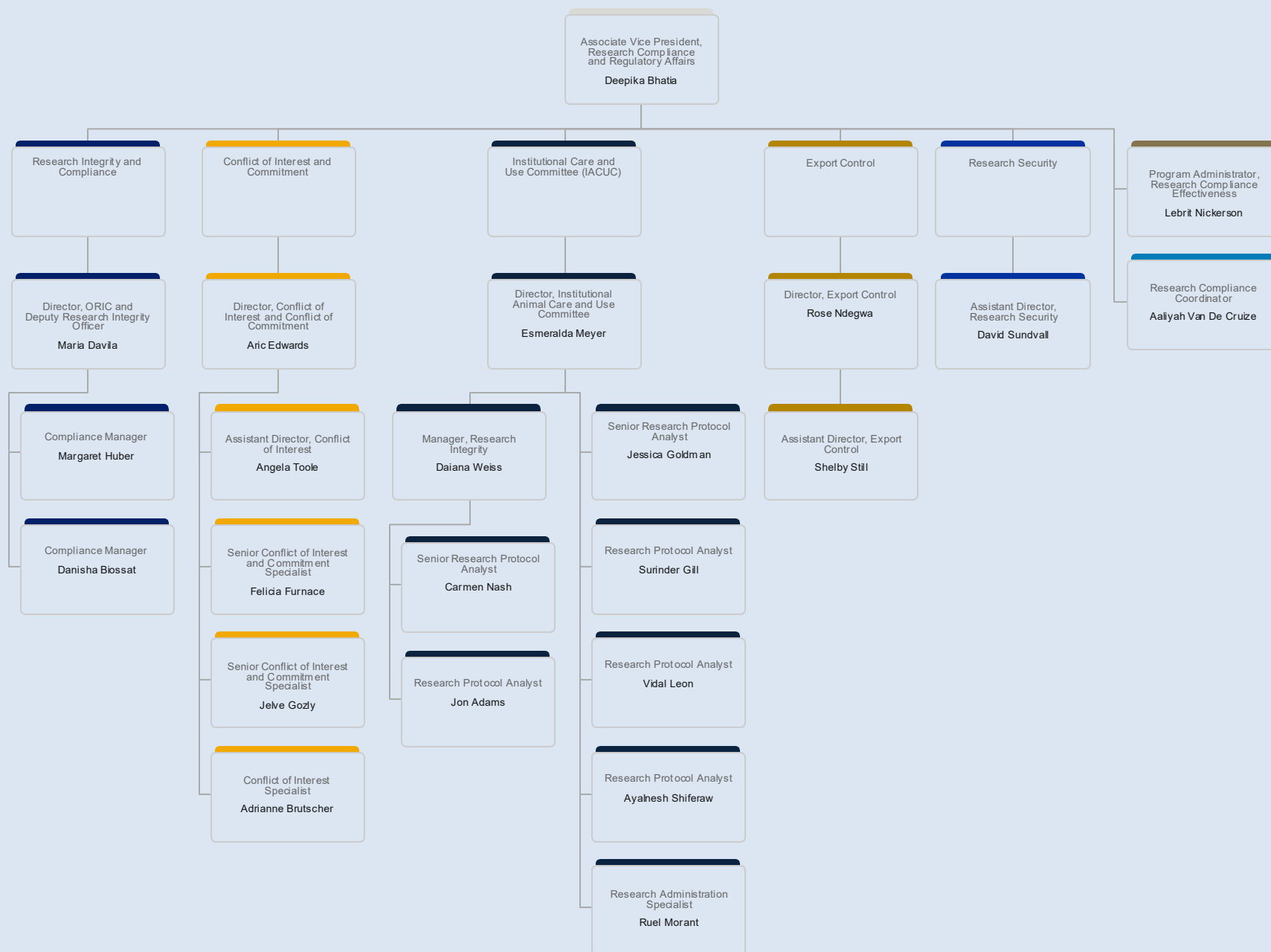
Tik Tok, NPRMs,
NSPM-33, Data
Sharing, ORA
Policies and more



Research Ethics

research
misconduct,
research
noncompliance,
investigations,
external agency
disclosures and
reporting

Research Compliance & Regulatory Affairs



INSTITUTIONAL ANIMAL CARE & USE (IACUC)

provides oversight over the humane and ethical animal care and use of animals in research at Emory University.

"The goals of the RCRA team are to initiate the development and implementation of a proactive, comprehensive, and integrated compliance strategy that supports the success of Emory's entire academic research enterprise"

RESEARCH INTEGRITY & COMPLIANCE

assists the Emory research community in promoting research compliance with Emory policies and Federal Regulations for research misconduct, controlled substances, research noncompliance.

CONFLICT OF INTEREST & COMMITMENT

supports Emory's research community in identifying and managing conflicts of interest and commitment related to research and other scholarly activities according to the institutional policy



EXPORT CONTROL

assists EU community in engaging in international collaborations, hosting international visitors or visiting scholars, international travel, employing foreign nationals (nonimmigrant employees), and shipping.

PROGRAM EFFECTIVENESS

provides support for research policy approvals, vetting minors conducting research on campus, thorough investigative processes, outreach, education and awareness for our researchers to understand and comply with state, federal, sponsor requirements related to their research activities.

SECURE SOUTHEAST

NSF SECURE Center's Southeast Lead
National leadership for research security

RESEARCH SECURITY

provides ongoing support to researchers to continue and enhance international research affiliations, engagements, and collaborations.

10 KEY TAKEAWAYS TO STAY COMPLIANT



Disclosure Compliance

- Update COI profile for interests and outside activities in eDisclose
- Disclose foreign affiliations



Prevent Research Misconduct

- Get an iThenticate account
- Report any concerns, questions to rio@emory.edu



Minors in Research

- Intake form and approval prior to minors conducting research



International Collaborations

- Connect with RCRA teams in Research Security & Export Controls
- Get a loaner laptop for Emory business related international travel



Effort Reporting

- Federal reporting requirement to certify effort 2X/year
- All about effort reporting - <https://youtu.be/BlrjHLQBu8A>



10 KEY TAKEAWAYS TO STAY COMPLIANT



SciENcv

- Effective May 2025
- Register for [monthly training workshop](#)



Animal/Human Research

- Connect with IRB and IACUC.



Using Controlled Substances in Research Projects

- Make sure to have a DEA license and/or GBP permit



Register to Attend Ask RCRA Monthly.



Connect with Us

- Reach out to researchcompliance@emory.edu

