



Emory University Office of Ethics and Compliance
February 2025



EMORY

EMORY UNIVERSITY CHIEF COMPLIANCE OFFICER

2



Melissa B. Hall, CPA, CFE, CCEP

- Joined Emory University September 1, 2024
- 14 years Internal Audit, Risk, and Compliance for Georgia Tech
- Compliance and Research Investigations
- 8 years service Association of College and University Auditors (ACUA) Board of Directors
Former President

EMORY RISK INTELLIGENT ORGANIZATION

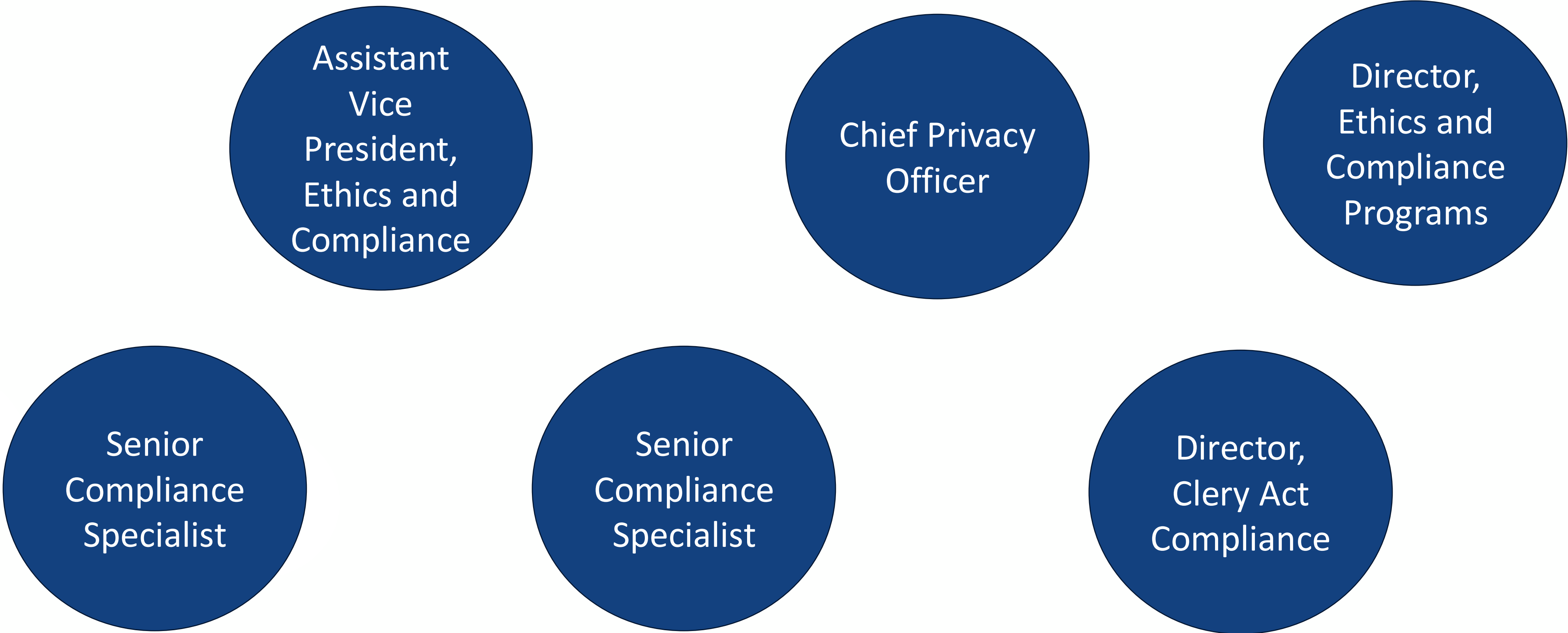
3



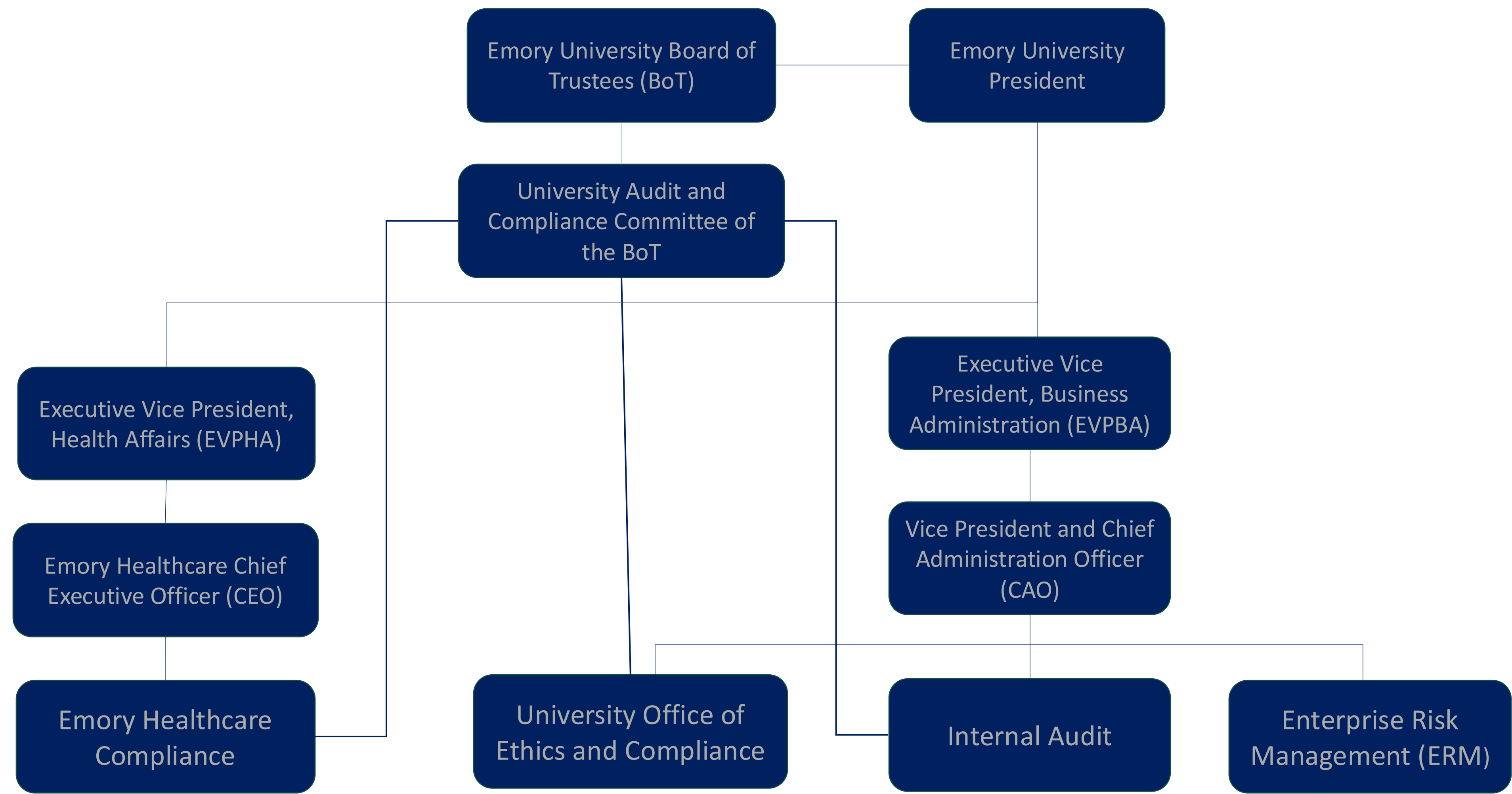
CHARACTERISTICS OF A RISK INTELLIGENT ORGANIZATION:

Culture
Integration
Proactive
Assessment and Prioritization
Robust Controls and Mitigation
Communication and Reporting
Continuous Monitoring and Evaluation

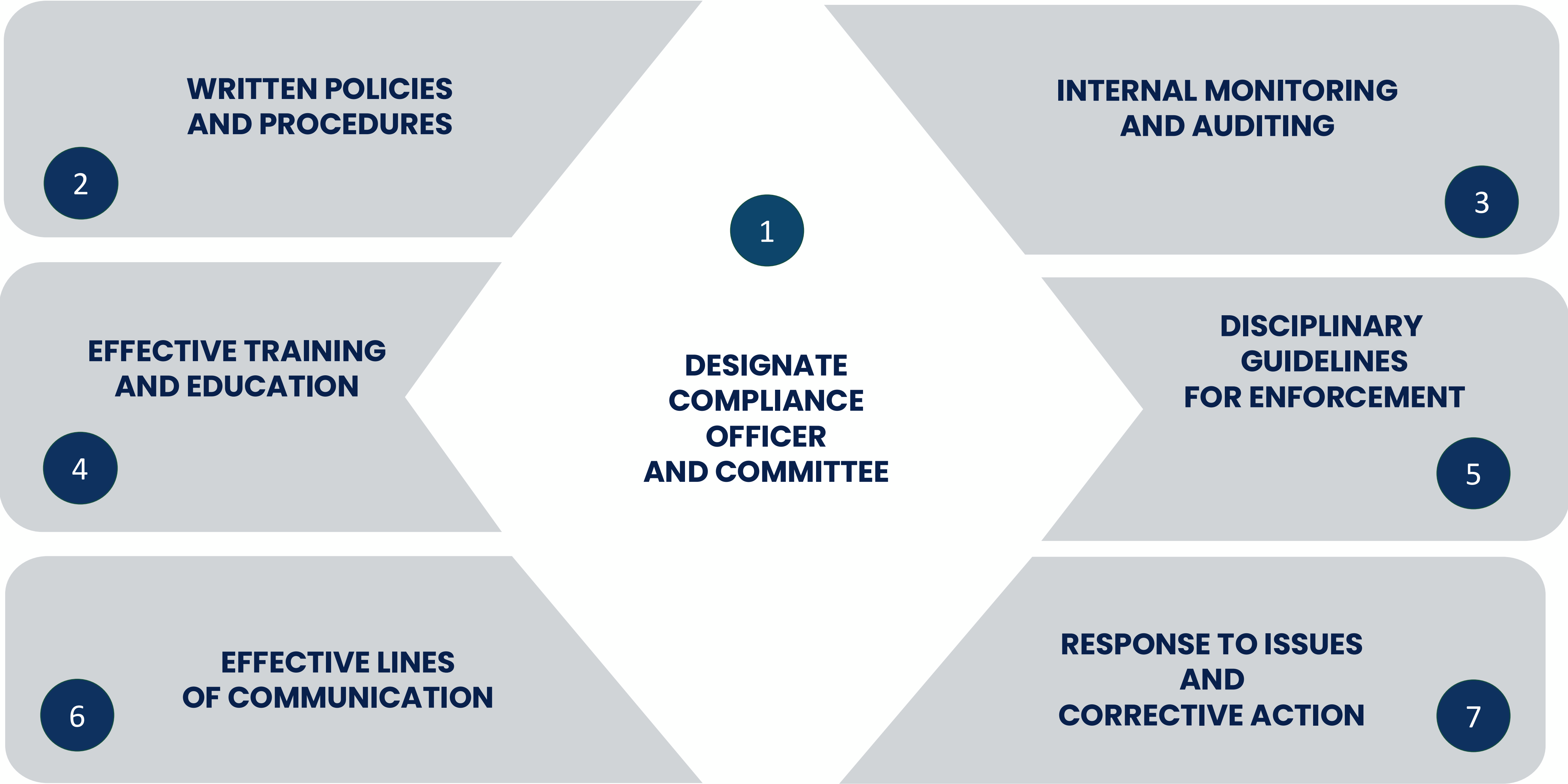
EMORY UNIVERSITY OFFICE OF ETHICS AND COMPLIANCE



RISK, INTERNAL AUDIT AND COMPLIANCE ORGANIZATION CHART AND GOVERNANCE STRUCTURE



DOJ's 7 ELEMENTS OF EFFECTIVE COMPLIANCE PROGRAM



Office of Ethics and Compliance

Areas of Focus and Initiatives

