



EMORY
UNIVERSITY

EMORY

Changes to ORI Regulations and Policy 7.8

**Maria Davila, Deputy RIO and
Director/Research Integrity**



EMORY
UNIVERSITY

**Research Compliance
and Regulatory Affairs**

Research Administration

In This Presentation

Definitions

Changes to 7.8

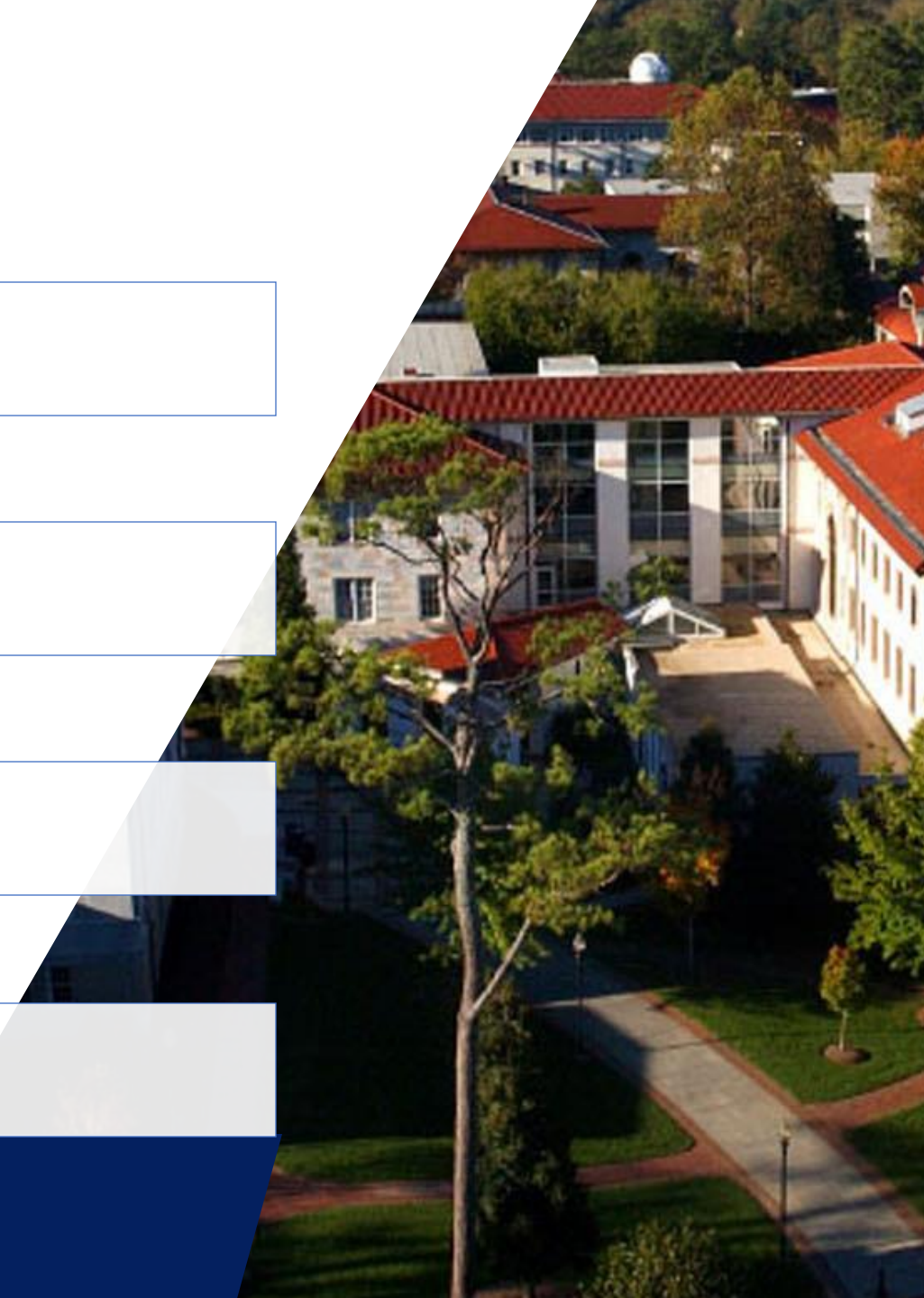
New Processes

New Resources



EMORY
UNIVERSITY

Research Compliance
and Regulatory Affairs



Definitions

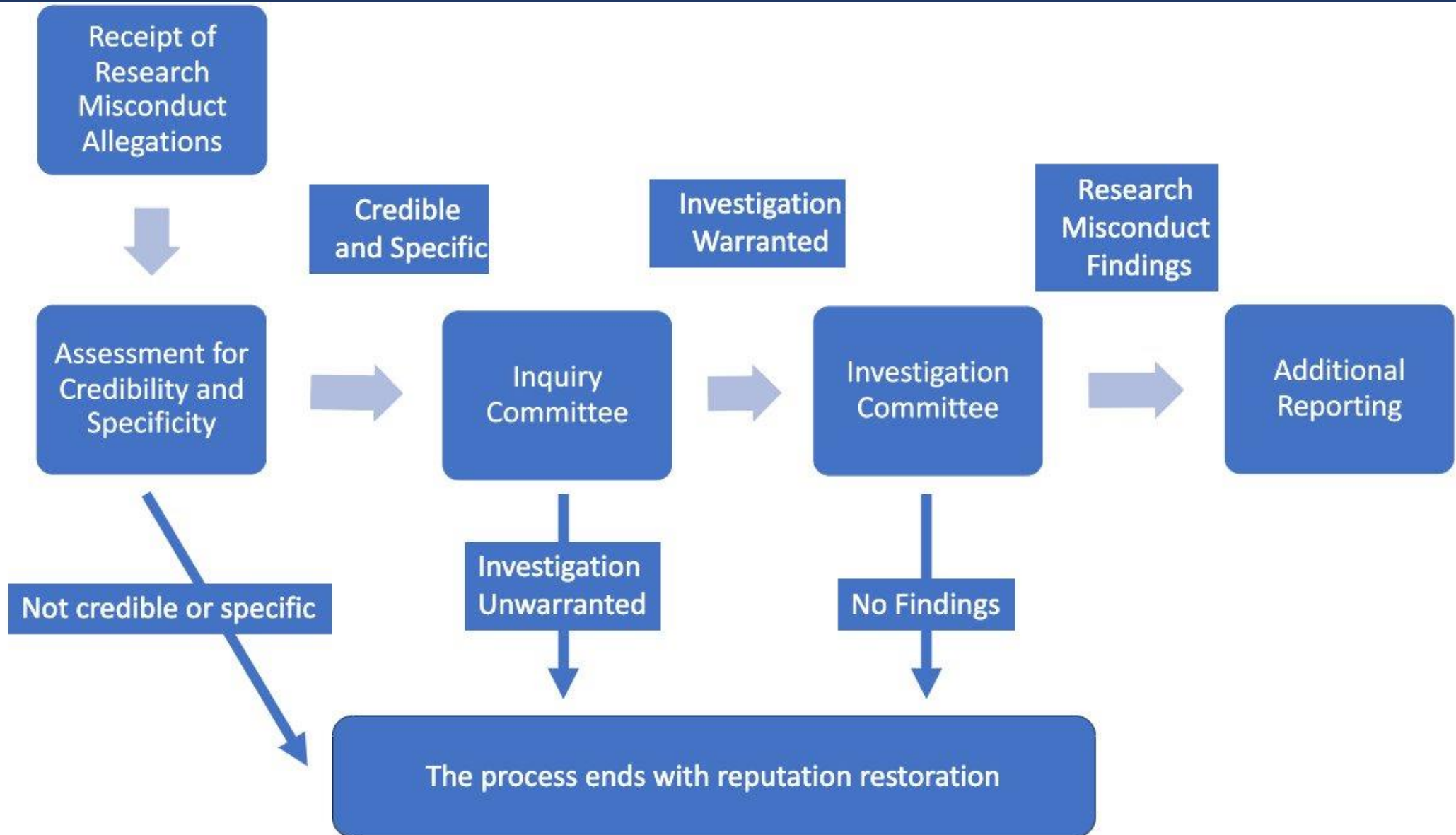


Definitions

- Research Misconduct
 - Fabrication, Falsification and Plagiarism
- Respondent
- Complainant
- Assessment
- Inquiry and Investigation



RM Allegation Review Process



Changes to Emory Policy 7.8



Highlights of Regulatory Requirements

- **Formalized Assessment:** Institutions must now have a formal process for an initial assessment of all allegations to determine if they meet the definition of research misconduct, are within PHS jurisdiction, and are credible enough to warrant a full inquiry.
- **Streamlined Inquiry Process:** An inquiry committee is no longer a requirement; a single institutional official, such as the Research Integrity Officer (RIO), can now conduct the inquiry.
- **Expanded Inquiry Reports:** Inquiry reports must include more detail, such as an inventory of sequestered research records, transcripts of interviews, scientific analyses, and the procedural history.

Highlights of Regulatory Requirements

- **Clarified Definitions and Timelines:** The rule provides clearer definitions for key terms and extends allowable timelines for procedural steps, which leaders involved in investigations must understand.
- **Confidentiality and Non-Retaliation:** The rule strengthens protections for respondents and whistleblowers regarding confidentiality and retaliation, which leaders must ensure are enforced within their teams and departments.
- **Multiple Institution Process:** New guidance is provided for handling cases that span multiple institutions, which is especially relevant for leaders on large, collaborative grants.





Final Rule- ORI Research Misconduct Regulations

Let's Compare

2005



60 days for Inquiry/120 for Investigation



No clear process when more than one institution is involved



Reporting template, interviews, record-keeping requirements not defined

2025



90 days for Inquiry/180 for Investigation



If more than one institution is involved, Emory RIO will determine lead institution process



Emory currently uses:

- Similar templates,
- Court-transcriptionist for interviews
- Keeps detailed records

New Resources



New Resources



New Policy 7.8



New Infographic: <https://rcra.emory.edu/includes/documents/sections/research-misconduct/2005-vs-2025-42-cfr-part-93.pdf>



Modified Infographic: <https://rcra.emory.edu/includes/documents/sections/research-misconduct/rm-prevention-basics-to-know.pdf>



Training in Brainier: search for “Preventing Research Misconduct”.



Our website (not new but above-info added): <https://rcra.emory.edu/research-misconduct/research-misconduct-2024.html>



iThenticate: program to detect possible plagiarism. For Faculty members.

Questions?

